

## Way forward

- Expand membership base, initiate women's leadership building for addressing issues pertaining to Gender Equality and Women Empowerment.
- Leverage the role of Mahila Panchayats as service providers and redressal mechanisms at doorstep for realizing the idea of 'no women left out'
- Expand geographical base and engage influencers, develop movement partnerships and strengthen reputation and influence.
- Consider women's economic empowerment as integral to the agenda of women empowerment. Initiate microcredit process in the Mahila panchayat.
- Widen the umbrella of issues- include women's mental, sexual and reproductive health as key to enhancing women's wellbeing.
- Embrace a multipronged approach for the empowerment of women at all levels- individual, family, society and institution.
- Be active citizens- review existing gaps, participate and produce evidence for minimizing the gaps in women's access to available services.
- Become an ally of issue based networks/women's groups/alliances.
- Mobilize resources through impactful strategic alliances
- Develop and Strengthen internal monitoring and evaluation systems.
- Include men as important allies in ending violence against women and girls.

### The network would continue to .....

- Be a visible and powerful advocate for women and girls.
- Promote and inspire a movement for 'women helping women', building solidarity and enabling women to use their agency to say no to violence.
- Enhance women's access to a coordinated set of essential multi-sectorial services like - health, police, shelter, and judiciary.
- Become the community based champions of change in negative gender norms that perpetuate violence against women and girls.



## Mahila Panchayat Network

(A Delhi State level forum 'for the women, by the women')

### Mission Statement



### Who we are ....

A grassroots all women's collectives 2500 women members networked through 20 Mahila Panchayats across 7 districts of Delhi

### Our strength lies in...

Our members, women's solidarity and conviction to ensure that 'No woman is left out'

### We value and....

Promote gender equality in all spheres of life. Respect Dignity, Diversity and Individuality of Women and Girls

### We Work for the ...

Prevention of DV/IPV against women and girls

We create community redressal mechanisms for resolving domestic conflict

### United We ...

Rise, Respond and realize the rights of women to live life free of violence and fear.





Mission Statement:

“Respect women's dignity, diversity and individuality, eliminate violence against women and girls and promote gender equality in all spheres of life”-

Context:

Domestic violence against women and girls transcends across intersection of caste, class, religion and ethnicity and is a major barrier to women's overall wellbeing. According to National Crime Records Bureau Report 2016, amongst all metropolitan cities Delhi UT reported the maximum number of (3645) cases of Cruelties by Husband or His Relatives'. Also, as per NFHS 4 , in Delhi the percentage of ever married women experiencing domestic violence increased from 16.3%in NFHS 3 to 26.8%in NFHS 4.

33% ever married women have experienced physical, sexual or emotional spousal violence.

14 % women have sought any support to stop the violence

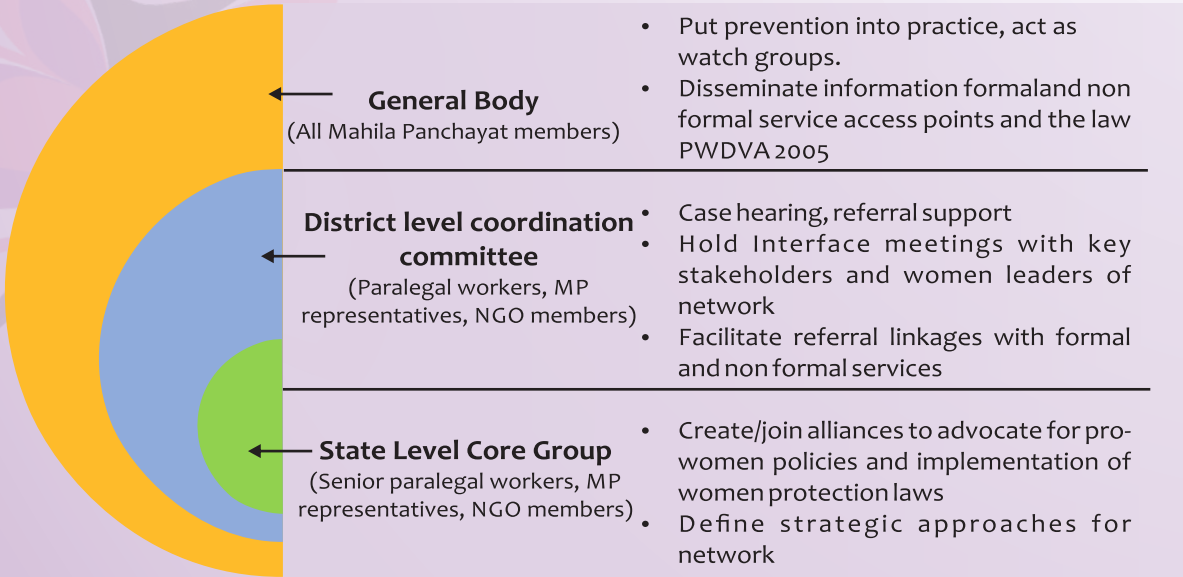
(NFHS 4 India Report)

Upscaling the Mahila Panchayats into State level Network:

Over the decades Mahila Panchayats effectively worked as a dispute resolution forum to promote violence free homes without sanctioned legal intervention. They have taken up sustainable practices from niche to mainstream to tackle the gender biases and the community challenges in eliminating domestic/intimate partner violence against women and girls. The strength of Mahila Panchayat is in its organic evolution and the core concept of women helping women across intersections of class, caste, ethnicity, religion and disability.

Given the context the mission statement of Mahila Panchayats (MP) is aimed at reimagining the role of Mahila Panchayats as redressal mechanisms at the doorstep, as a collective power to challenge the patriarchal norms, scale up at state level into a networked unit and advocate for women's rights.

Mahila Panchayat Network - A Platform for Joint Action



The individual MPs will be interlinked through a three tier structure- a core group, Zonal coordination Committee and the General Body. The General Body may expand through membership mobilization. Over 3057 members have been mobilized across 20 Mahila Panchayats. The idea is to add up at least 125 new members in each Mahila Panchayat. Currently, the focus is on promoting Gender Equality and ending Domestic/Intimate Partner Violence, however, in future the network may choose to expand the umbrella to address issues which restricts women and girls' overall development.

Insights into Change in Context:

- A gender just support system that responds timely and adequately to the needs of women survivors of Domestic/Intimate Partner Violence.
- Dedicate resources necessary for violence prevention measures, alongside efficiently coordinated set of referral services.
- High impact collaborative platforms created within the system to facilitate the effective implementation of policies pertaining to women
- More investment into women's movement building initiatives.
- Raised consciousness among men, women, boys and girls for eliminating negative gender norms that perpetuate violence against women and girls.
- Initiate critical conversations on women's rights - different constituents work together—governments, civil society, academia, media, and affected populations.

